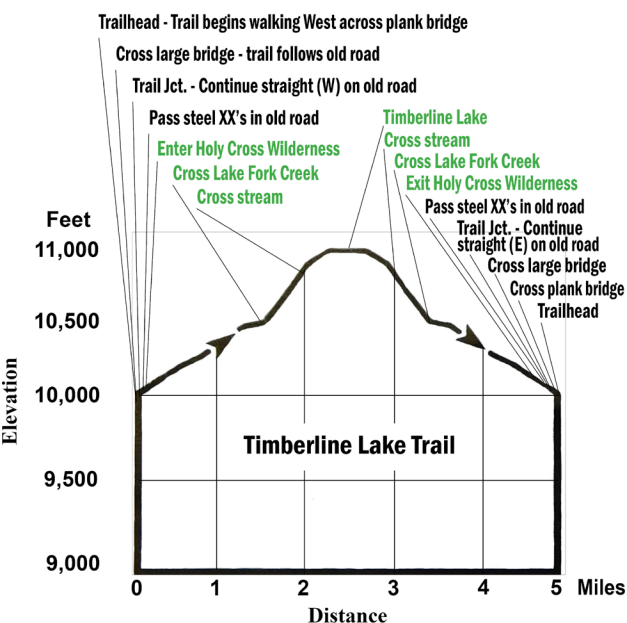


Timberline Lake Trail (B)



Timberline Lake



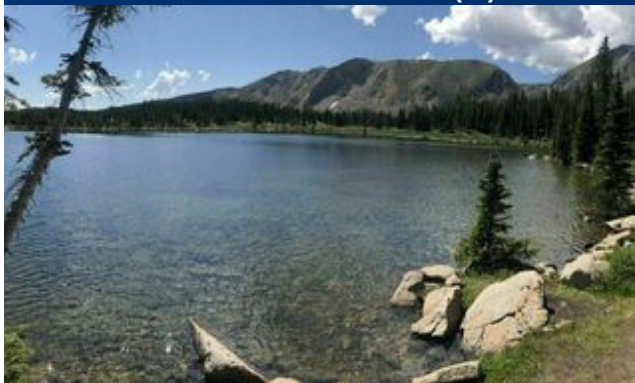
Type of Hike: Out & Back (5 miles round trip).

Difficulty: Beginner

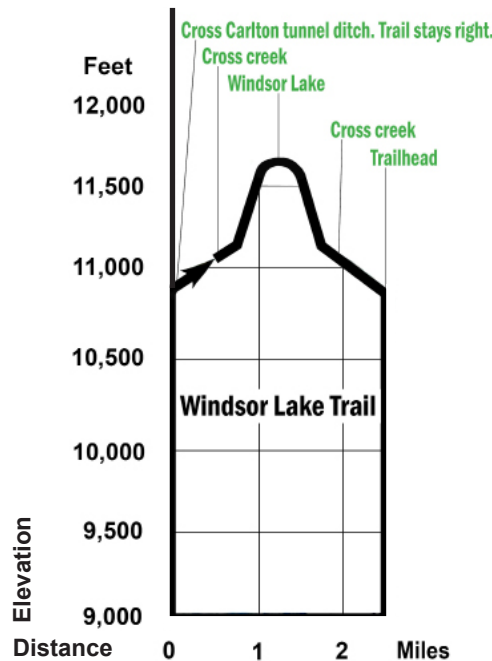
Notes: Hikers will experience rocky terrain and a 1,000 feet elevation climb in the 2 ½ miles hike to the lake. Water crossings may require wading. Hikers have made several trails along creeks and boggy areas trying to navigate creek crossings and wet areas. After crossing a creek or a wet area be sure you are on the main trail.

Directions: Go to Turquoise Lake. Cross Sugar Loaf Dam. Follow road around the south west sides of the lake passing May Queen Campground to trailhead and parking, about one mile past the campground on west side of the road.

Windsor Lake Trail (C)



Windsor Lake photo provided by All Trails



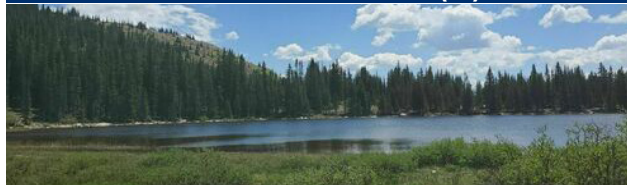
Type of Hike: Out & Back (2 ½ miles round trip).

Difficulty: Beginner ~ strenuous

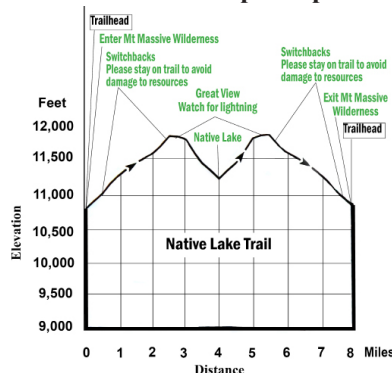
Notes: This short, strenuous hike takes hikers to an alpine lake surrounded by peaks and ridges that make up a portion of the Continental Divide.

Directions: Follow Lake County Road 4 to Turquoise Lake. Cross Sugar Loaf Dam. Follow road along the south side of the lake. Turn left on Forest Road 105/Hagerman Pass Road. Follow road for 3 ½ miles to the trailhead for Windsor Lake. Parking available on right (east) side of road.

Native Lake Trail (D)



Native Lake photo provided by All Trails



Type of Hike:
 Out & Back
 (8 miles round trip)

Difficulty:
 Intermediate

Directions: Follow Lake County Road 4 to Turquoise Lake. Cross Sugar Loaf Dam. Follow road along the south side of the lake. Turn left onto Forest Road 105/Hagerman Pass Road. Follow road for 3 ½ miles to the trailhead for Native Lake. Trailhead and parking in same location.

Midland Railroad Grade Hagerman Lake & Tunnel (E)



Hagerman Lake (left) Hagerman Tunnel (right)

Type of Hike

- Out & Back: 5 miles round trip
- Loop: 6 miles (Notice loop begins at end of railroad grade)

Difficulty: Beginner ~ Portion of the trail follows the historic Midland Railroad grade. Rocky portion of trail goes through historic Douglas City below Hagerman Lake.

Directions: Go to Turquoise Lake. Cross Sugar Loaf Dam. Follow road along the south side of the lake. Turn left onto Forest Road 105/Hagerman Pass Road. Follow road for 3 ½ miles to the parking lot across from the trailhead for Windsor Lake. Walk road to the Midland Trailhead or if you have a high clearance vehicle you can drive the one mile to the Midland Trailhead.



LAKE COUNTY
 TOURISM PANEL

Turquoise Lake Recreational Area

Hiking Trails

- | | |
|-------------------|---|
| A Turquoise Lake | E Midland Railroad Grade and Haggerman Tunnel |
| B Timberline Lake | F Kearney Park Loop |
| C Windsor Lake | G Highland Loop |
| D Native Lake | |



Turquoise Lake Trail (A)

This is a popular non-motorized multiple use trail. Expect to see mountain bikers, runners, anglers and other hikers.

Difficulty: Beginner ~ Trail follows the shoreline.

Type of Hike: Out & Back 12 miles (20 Km) Round trip. The hike can be divided into 6 miles (10 Km) if hiker is picked up at the opposite end of the trail.

Trailhead Entrances and Parking

- Sugar Loaf Dam. Parking on east side of dam. Trailhead begins at the Sugar Loaf Dam monument across the road from the parking lot.
- May Queen Campground parking area (\$7 fee) is on the west side of the lake. Cross the Sugar Loaf Dam and continue to the west side of the lake.

Trail conditions east side of lake: Sandy trail passes several campgrounds.

Trail conditions north side of lake: Trail traverses rocky terrain, water crossings, and passes historic mine sites.

San Isabel National Forest

Wilderness Areas

Directions to Turquoise Lake

- Traveling south through Leadville, at the traffic light on Harrison Ave (Hwy 24) and 6th street turn right (west).
- Travel several blocks. You'll come to a T-insection. Turn right on McWethy Drive/Lake County 4.
- Continue on Lake County 4 to Turquoise Lake Recreation Area.



View of Turquoise Lake from trail on east side of lake. Insert: Sugar Loaf Dam monument Background: Mt Galena (12,893 ft) upper right corner.

Kearney Park Loop (F) Highland Loop (G)

Both Kearney Park Loop and Highland Loop trailheads are accessed at the Leadville National Fish Hatchery. Both loops enter Mt. Massive Wilderness area 1 ¼ mile from trailhead.

Kearney Park Loop

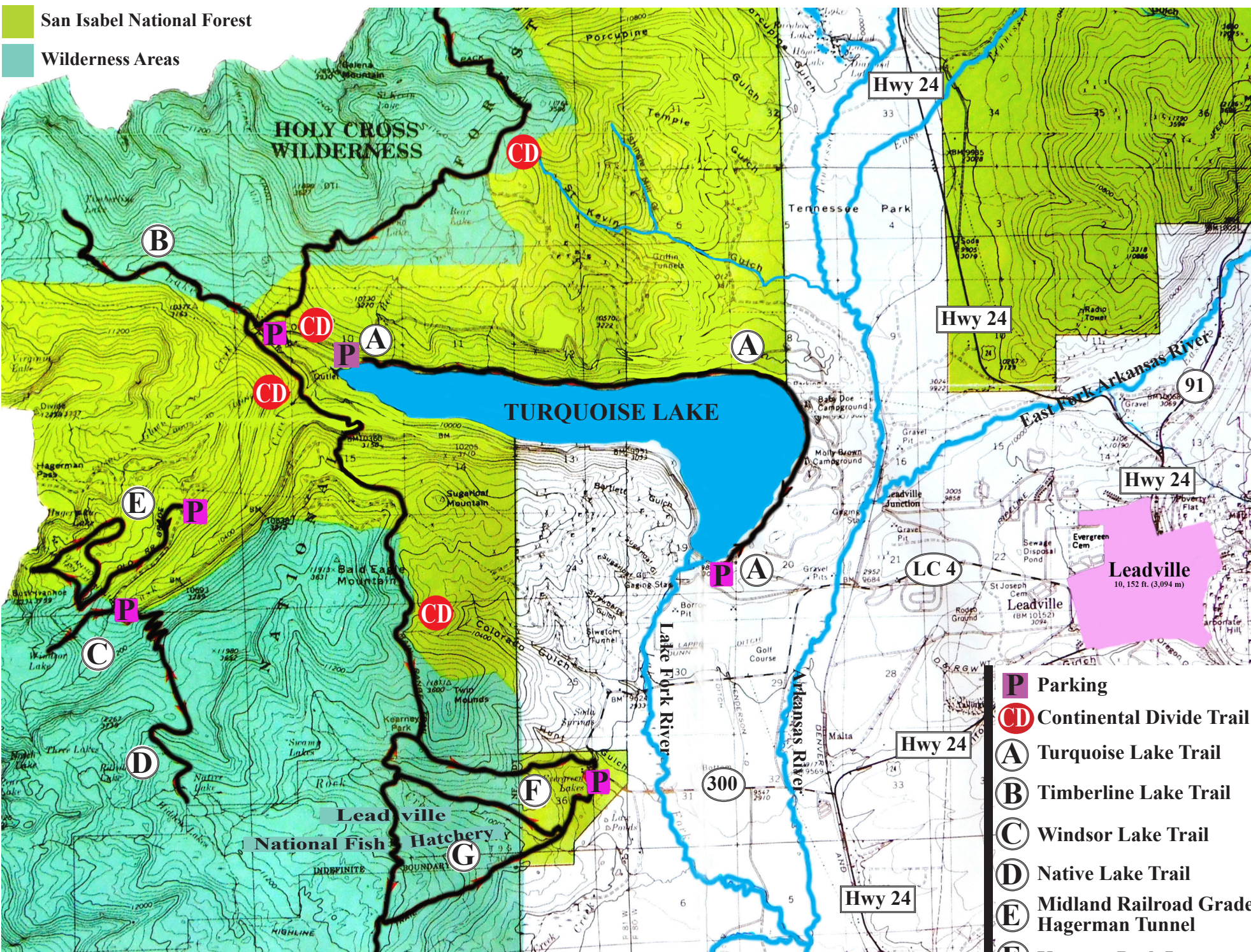
Type of Hike: Approximately 5 ½ mile loop
Difficulty: Intermediate
Elevation climb: Approximately 1,000 ft
Note: There are many junctions at the beginning of this loop. Be alert! Pay attention to signage.

Highland Loop

Type of Hike: Approximately 6 ¾ mile loop
Difficulty: Intermediate
Elevation climb: Approximately 1,500 ft
Note: There are many junctions at the beginning of this loop. Be alert! Pay attention to signage.

Directions to National Fish Hatchery

- From the traffic light at 6th street, follow Hwy 24 south for 3.9 miles.
- Turn right (west) on State Road 300.
- Follow it to the Leadville National Fish Hatchery.
- The west parking area has a detailed sign for Kearney Park Loop and Highland Loop trails.



- P** Parking
- CD** Continental Divide Trail
- A** Turquoise Lake Trail
- B** Timberline Lake Trail
- C** Windsor Lake Trail
- D** Native Lake Trail
- E** Midland Railroad Grade Hagerman Tunnel
- F** Kearney Park Loop
- G** Highline Loop

References: U.S. Forest Service, San Isabel National Forest Leadville Ranger District and Leadville/Lake County Chamber of Commerce.
 Brochure Design: © Aleyant Systems, LLC ~ Research and Photos: M. A. Nelson ~ Photos: All Trails website: www.alltrails.com